

Polymer HRP Goat Anti Mouse/Rabbit IgG(H+L)-S

CatalogNo: SH0003

•Main information

Target	IgG(H+L)
Reactivity	Mouse,Rabbit
Applications	IHC,mIHC
Host Species	Goat
Conjugated	HRP

•Recommended Dilutions

Ready to Use

•Detailed information

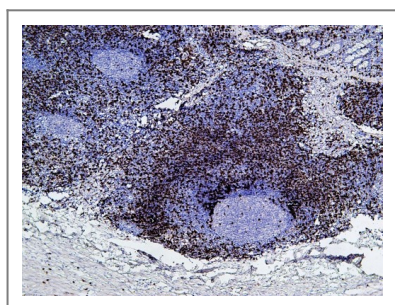
Specificity This antibody detects Mouse or Rabbit IgG antibodies with labeled HRP

Storage 2-8°C/1 year

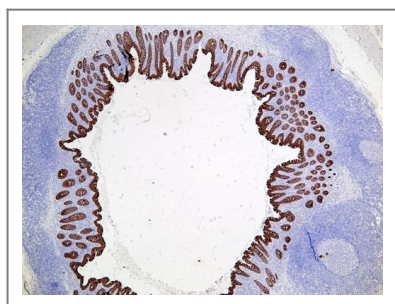
•Target Information

Protein Name

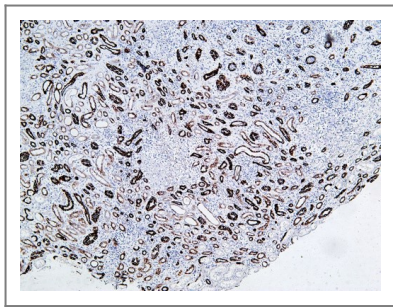
•Validation Data



Human appendix tissue was stained with anti-CD8 primary antibody and detected by the Polymer HRP Goat Anti Mouse/Rabbit IgG(H+L)-S.



Human appendix tissue was stained with anti-CK-Pan primary antibody and detected by the Polymer HRP Goat Anti Mouse/Rabbit IgG(H+L)-S.



Human kidney tissue was stained with anti-CK7 primary antibody and detected by the Polymer HRP Goat Anti Mouse/Rabbit IgG(H+L)-S.

•Contact information

Orders: order@lamarck.cn
Support: support@lamarck.cn
Telephone: 400-801-6722
Website: <http://www.Lamarck.com>
Address: All rights reserved ©2025 Lamarck.



Please scan the QR code to access additional product information:
Polymer HRP Goat Anti Mouse/Rabbit IgG(H+L)-S

For Research Use Only. Not for Use in Diagnostic Procedures.

[Antibody](#) | [ELISA Kits](#) | [Protein](#) | [Reagents](#)