

## 鼠兔三标四色荧光检测试剂盒

CatalogNo: MH0001

### •Main information

#### Applications

IF, mIHC

### •Recommended Dilutions

Ready to use

### •Detailed information

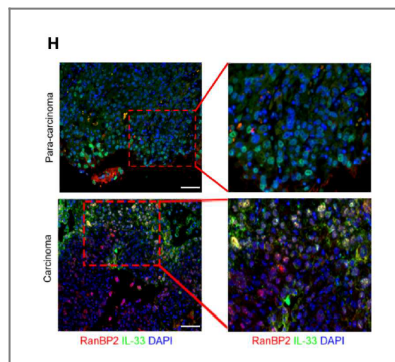
#### Storage

See datasheet

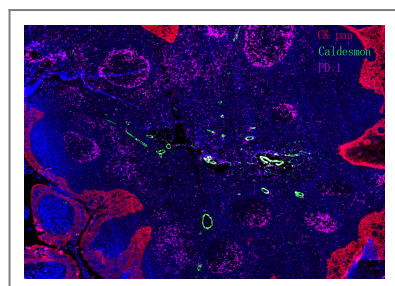
### •Target Information

#### Protein Name

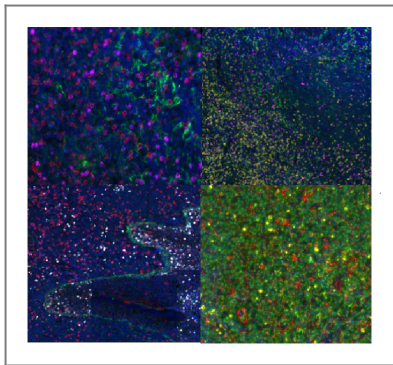
### •Validation Data



SUMOylated IL-33 in the nucleus stabilizes the transcription factor IRF1 in hepatocellular carcinoma cells to promote immune escape Science Signaling Nanhong Tang



Fluorescence multiplex immunohistochemical analysis of normal human appendix tissue (formalin-fixed paraffin-embedded section). The section was incubated in 3 rounds of staining; in the order of CK PAN ., PD-1., Caldesmon pan. ,each using a separate fluorescent tyramide signal amplification system : Treble-Fluorescence immunohistochemical mouse/rabbit kit (pH9.0)



Fluorescence multiplex immunohistochemical analysis of Human tonsil tissue (formalin-fixed paraffin-embedded section). The immunostaining was performed on a Leica Biosystems BOND® MAX instrument with an Sextuple-Fluorescence kit . The section was incubated in 6 rounds of staining; sequentially for Anti-antibodies; each using a separate fluorescent tyramide signal amplification system. EDTA based antigen retrieval (Leica Biosystems BOND® Epitope Retrieval Solution 2, pH 9.0, 20 minutes) was used in between rounds of tyramide signal amplification to remove the antibody from the previous round, to avoid any cross-reactivity. DAPI (dark blue) was used as a nuclear counter stain. Microscopy and pseudocoloring of individual dyes was performed using a Slideviewer Imaging System (3D histech).

## •Contact information

Orders: [order@lamarck.cn](mailto:order@lamarck.cn)  
Support: [support@lamarck.cn](mailto:support@lamarck.cn)  
Telephone: 400-801-6722  
Website: <http://www.Lamarck.com>  
Address: All rights reserved ©2025 Lamarck.



Please scan the QR code  
to access additional  
product information:  
鼠兔三标四色荧光检测  
试剂盒

For Research Use Only. Not for Use in Diagnostic Procedures.

[Antibody](#) | [ELISA Kits](#) | [Protein](#) | [Reagents](#)