

Calponin-1 (R3490) Rabbit mAb

CatalogNo: AR0407 **Recombinant FSS™**

•Main information

Target	Calponin-1
Reactivity	Human,Mouse,Rat
Applications	WB,IHC,IF,ELISA
MW (kDa)	33kD (Calculated) 33kD (Observed)
Host Species	Rabbit
Isotype	IgG,Kappa

•Recommended Dilutions

IHC 1:200-1:1000
WB 1:2000-1:10000
IF 1:200-1:1000
ELISA 1:5000-1:20000
Note: For IHC, we suggest antigen retrieval with TE buffer pH 9.0 (Cat#RH0011)

•Detailed information

Specificity	Endogenous
Storage	-15°C to -25°C/1 year(Do not lower than -25°C, Ship by ice bag)
Formulation	PBS, 50% glycerol, 0.05% Proclin 300, 0.05%BSA
Purification	Protein A
Clonality	Monoclonal
Clone Number	R3490

•Target Information

Gene name	CNN1
Protein Name	Calponin-1

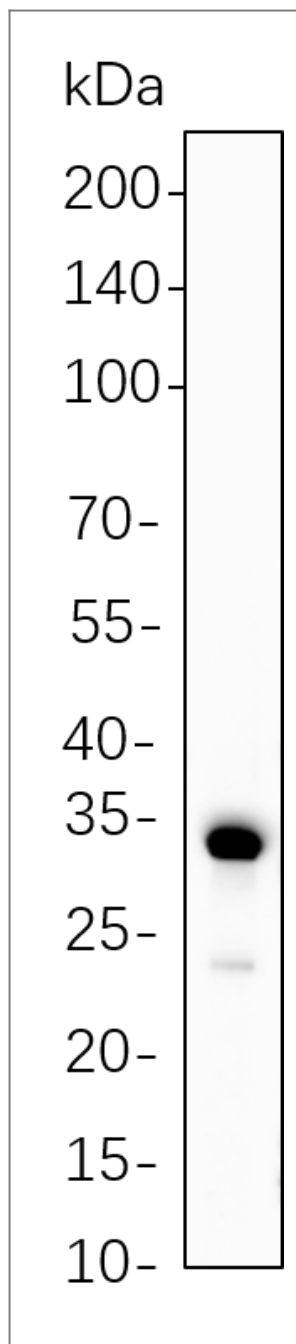
Organism	Gene ID	UniProt ID
Human	1264;	P51911;

Cellular Localization	Cytoplasm
------------------------------	-----------

Tissue specificity Smooth muscle, and tissues containing significant amounts of smooth muscle.

Function Function:Thin filament-associated protein that is implicated in the regulation and modulation of smooth muscle contraction. It is capable of binding to actin, calmodulin, troponin C and tropomyosin. The interaction of calponin with actin inhibits the actomyosin Mg-ATPase activity.,similarity:Belongs to the calponin family.,similarity:Contains 1 CH (calponin-homology) domain.,similarity:Contains 3 calponin-like repeats.,subunit:Part of cGMP kinase signaling complex at least composed of ACTA2/alpha-actin, CNN1/calponin H1, PLN/phospholamban, PRKG1 and ITPR1.,tissue specificity:Smooth muscle, and tissues containing significant amounts of smooth muscle.,

•Validation Data



Western Blot analysis was performed using Rat lung cell lysates , and proteins were separated by 4-20% SDS-PAGE.

•Contact information

Orders: order@lamarck.cn
Support: support@lamarck.cn
Telephone: 400-801-6722
Website: <http://www.lamarck.com.cn/>
Address: All rights reserved ©2025 Lamarck.



Please scan the QR code to access additional product information:
Calponin-1 (R3490)
Rabbit mAb