

EGFR (R640A) Rabbit mAb

CatalogNo: AR0117 **Recombinant FSS™**

•Main information

Target	EGFR
Reactivity	Human,Mouse,Rat
Applications	WB,IHC,IF,IP,ELISA
MW (kDa)	134kD (Calculated) 175kD (Observed)
Host Species	Rabbit
Isotype	IgG,Kappa

•Recommended Dilutions

IHC 1:200-1:1000
WB 1:2000-1:10000
IF 1:200-1:1000
ELISA 1:5000-1:20000
IP 1:50-1:200
Note: For IHC, we suggest antigen retrieval with TE buffer pH 9.0 (Cat#RH0011)

•Detailed information

Specificity	Endogenous
Storage	-15°C to -25°C/1 year(Do not lower than -25°C, Ship by ice bag)
Formulation	PBS, 50% glycerol, 0.05% Proclin 300, 0.05%BSA
Purification	Protein A
Clonality	Monoclonal
Clone Number	R640A

•Target Information

Gene name	EGFR ERBB ERBB1 HER1
Protein Name	Epidermal growth factor receptor

Organism	Gene ID	UniProt ID
Human	1956;	P00533;
Mouse	13649;	Q01279;

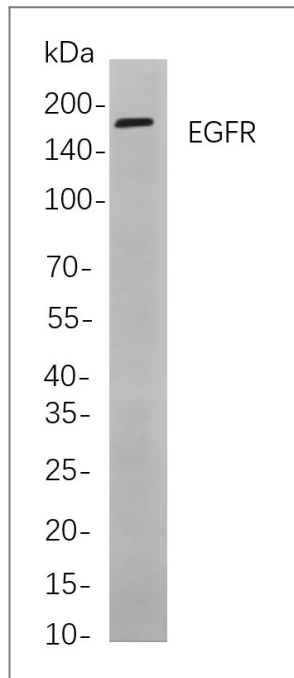
Cellular Localization Cell membrane ; Single-pass type I membrane protein . Endoplasmic reticulum membrane ; Single-pass type I membrane protein. Golgi apparatus membrane; Single-pass type I membrane protein. Nucleus membrane; Single-pass type I membrane protein. Endosome . Endosome membrane. Nucleus . In response to EGF, translocated from the cell membrane to the nucleus via Golgi and ER (PubMed:20674546, PubMed:17909029). Endocytosed upon activation by ligand (PubMed:2790960, PubMed:17182860, PubMed:27153536, PubMed:17909029). Colocalized with GPER1 in the nucleus of estrogen agonist-induced cancer-associated fibroblasts (CAF) (PubMed:20551055). .; [Isoform 2]: Secreted.

Tissue specificity Ubiquitously expressed. Isoform 2 is also expressed in ovarian cancers.

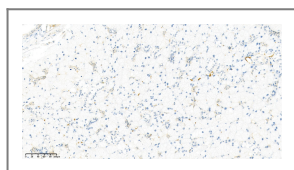
Function

Catalytic activity:ATP + a [protein]-L-tyrosine = ADP + a [protein]-L-tyrosine phosphate.,Disease:Defects in EGFR are associated with lung cancer [MIM:211980].,Function:Isoform 2/truncated isoform may act as an antagonist.,Function:Receptor for EGF, but also for other members of the EGF family, as TGF-alpha, amphiregulin, betacellulin, heparin-binding EGF-like growth factor, GP30 and vaccinia virus growth factor. Is involved in the control of cell growth and differentiation. Phosphorylates MUC1 in breast cancer cells and increases the interaction of MUC1 with C-SRC and CTNNB1/beta-catenin.,miscellaneous:Binding of EGF to the receptor leads to dimerization, internalization of the EGF-receptor complex, induction of the tyrosine kinase activity, stimulation of cell DNA synthesis, and cell proliferation.,online information:EGFR entry,PTM:Monoubiquitinated and polyubiquitinated upon EGF stimulation; which does not affect tyrosine kinase activity or signaling capacity but may play a role in lysosomal targeting. Polyubiquitin linkage is mainly through 'Lys-63', but linkage through 'Lys-48', 'Lys-11' and 'Lys-29' also occur.,PTM:Phosphorylation of Ser-695 is partial and occurs only if Thr-693 is phosphorylated.,similarity:Belongs to the protein kinase superfamily. Tyr protein kinase family.,similarity:Belongs to the protein kinase superfamily. Tyr protein kinase family. EGF receptor subfamily.,similarity:Contains 1 protein kinase domain.,subunit:Binds RIPK1. CBL interacts with the autophosphorylated C-terminal tail of the EGF receptor. Part of a complex with ERBB2 and either PIK3C2A or PIK3C2B. The autophosphorylated form interacts with PIK3C2B, maybe indirectly. Interacts with PELP1. Binds MUC1.,tissue specificity:Ubiquitously expressed. Isoform 2 is also expressed in ovarian cancers.,

•Validation Data



Western blot analysis of lysates from HeLa cells, using EGFR Rabbit mAb.



Immunohistochemical analysis was performed on paraffin-embedded mouse salivary gland tissue sections using an anti-EGFR antibody.

•Contact information

Orders: order@lamarck.cn
Support: support@lamarck.cn
Telephone: 400-801-6722
Website: <http://www.lamarck.com.cn/>
Address: All rights reserved ©2025 Lamarck.



Please scan the QR code
to access additional
product information:
EGFR (R640A)
Rabbit mAb

For Research Use Only. Not for Use in Diagnostic Procedures.

[Antibody](#) | [ELISA Kits](#) | [Protein](#) | [Reagents](#)