

ROS1 Rabbit pAb

CatalogNo: [AB0532](#)

•Main information

Target	ROS1
Reactivity	Human,Mouse,Rat
Applications	IHC,IF
MW (kDa)	258kD (Calculated) 258kD (Observed)
Host Species	Rabbit
Isotype	IgG

•Recommended Dilutions

IHC 1:50-300
IF 1:50-300 Note: For IHC, we suggest antigen retrieval with TE buffer pH 9.0 (Cat#RH0011)

•Detailed information

Specificity	ROS1 Polyclonal Antibody detects endogenous levels of protein.
Storage	-15°C to -25°C/1 year(Do not lower than -25°C, Ship by ice bag)
Formulation	Liquid in PBS containing 50% glycerol, 0.5% BSA and 0.02% sodium azide.
Purification	The antibody was affinity-purified from rabbit antiserum by affinity-chromatography using epitope-specific immunogen.
Clonality	Polyclonal

•Target Information

Gene name ROS1 MCF3 ROS

Protein Name Proto-oncogene tyrosine-protein kinase ROS (Proto-oncogene c-Ros) (Proto-oncogene c-Ros-1) (Receptor tyrosine kinase c-ros oncogene 1) (c-Ros receptor tyrosine kinase)

Organism	Gene ID	UniProt ID
Human	6098 ;	P08922 ;
Mouse	19886 ;	Q78DX7 ;
Rat	;	Q63132 ;

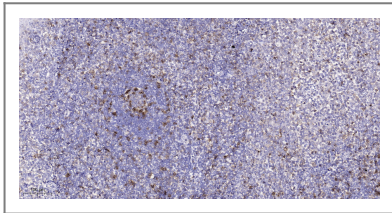
Cellular Localization Cell membrane ; Single-pass type I membrane protein .

Tissue specificity Expressed in brain. Expression is increased in primary gliomas.

Function

Catalytic activity:ATP + a [protein]-L-tyrosine = ADP + a [protein]-L-tyrosine phosphate.,Disease:A chromosomal aberration involving ROS1 is found in glioblastoma multiform (GBM). An homozygous deletion in chromosome 6q21 results in expression of a GOPC-ROS1 chimeric protein which has a constitutive receptor tyrosine kinase activity.,Function:This is probably a cell growth or differentiation factor receptor with a tyrosine-protein kinase activity.,similarity:Belongs to the protein kinase superfamily. Tyr protein kinase family. Insulin receptor subfamily.,similarity:Contains 1 protein kinase domain.,similarity:Contains 9 fibronectin type-III domains.,

•Validation Data



Immunohistochemical analysis of paraffin-embedded human tonsil. 1, Antibody was diluted at 1:200(4°C overnight). 2, Tris-EDTA,pH9.0 was used for antigen retrieval. 3,Secondary antibody was diluted at 1:200(room temperature, 45min).

•Contact information

Orders: order@lamarck.cn
Support: support@lamarck.cn
Telephone: 400-801-6722
Website: <http://www.Lamarck.com>
Address: All rights reserved ©2025 Lamarck.



Please scan the QR code to access additional product information:
ROS1 Rabbit pAb

For Research Use Only. Not for Use in Diagnostic Procedures.

[Antibody](#) | [ELISA Kits](#) | [Protein](#) | [Reagents](#)